



Protect Your System from Crashes and Configuration Problems

We've all experienced PC problems firsthand, or heard horror stories from friends and colleagues—a new software program is installed and suddenly the spreadsheet program stops functioning. You accidentally delete some files on your system, and nothing seems to work anymore. Or you added a new Zip® drive, and now your system won't even boot into Windows.

When PC problems occur, wouldn't you like to instantly return your system to the state it was in just before you installed the new hardware/software or made the system change?

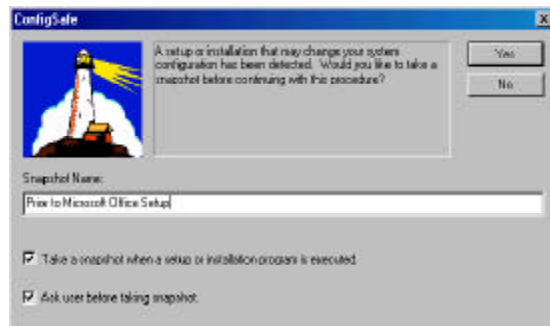
Now there's ConfigSafe 3.0. The newest addition to a family of market-leading system protection utilities, ConfigSafe will help keep your PC trouble-free.

Powerful System Protection

Most PC problems result from changes made by hardware or software, or the result of inadvertent changes made by users.

ConfigSafe protects your system by tracking user and application changes to key system components—a prominent source of PC failures—such as the Registry, configuration files, file versions (including DLLs, EXEs and drivers), system hardware and network connections. It works by taking a picture, or snapshot, of a system configuration at any time and it can also be configured to take periodic snapshots. ConfigSafe enables system and file restoration, returning problem PCs to a working state *in just seconds!*

"Every Windows system
should be equipped with
a utility like ConfigSafe"
- *Family PC*



Automatic Protection for Hardware & Software Installations

ConfigSafe's innovative Install Guard feature protects your system from potential conflicts. It automatically detects software or hardware installations, and prompts you to take a Snapshot. You never have to remember to take a Snapshot before making a change--ConfigSafe does it for you! And if your new program or hardware creates a conflict, restoring your system is just a click away.

Proven Leader

With over 15 million copies installed worldwide, ConfigSafe has successfully helped to reduce total cost of ownership (TCO) and support costs for a number of leading systems vendors and many corporations and individual users.

ConfigSafe Supports:

- **Windows 95/98**
- **Windows NT**
- **Networks**



www.configsafe.com



Overview of ConfigSafe Features

SNAPSHOT: Tracks and preserves record of changes to system

- Tracks configuration files, system changes (memory, processor, Windows version), drives, directories, Registry and System Assets (Windows desktop and other items defined by wildcard characters).

COMPARE & REPORT: Generates on-screen or printed reports of system changes

- Compare system changes
 - between current configuration & any Snapshot
 - between two Snapshots
 - between two different systems

RESTORE: Quickly returns system to chosen Snapshot configuration

- Can return system to:
 - last working configuration
 - any saved Snapshot configuration
 - original configuration
- Can restore a system from DOS
- Enables full or partial system restoration

MANAGE: Define and manage Snapshot options

- Define scheduled automatic Snapshots
- Rename, delete and organize Snapshots
- Import & export Snapshots for more in-depth troubleshooting

PROFILE: Create custom profiles to track specific system information

- Define multiple Profiles for different projects
- Provides greater flexibility over items tracked
- Work with Manage options to determine different frequencies for various Profiles

Other imagine LAN Products:

ConfigSafe Preload Edition

For hardware vendors, software vendors & systems integrators

ConfigSafe Desktop Edition

Standalone version for designed for use on any system

ConfigSafe Network Edition

Provides central manageability & administration

RegSafe™ Advanced Registry Management Suite

For network administrators, software developers and power users

"Through and through, ConfigSafe is a class act...(it) is the fastest and most flexible of the three products we looked at."

- *PC Magazine*

For More Information:



imagine LAN Inc.
the
configuration
experts

imagine LAN, Inc.

76 Northeastern Blvd., Suite 34B, Nashua, NH 03062

Phone: (800) 372-9776 (603) 889-3883

Fax: (603) 889-8822

Web: www.configsafe.com or www.imagine-lan.com

ConfigSafe Advantages

- Supports all major Windows platforms
- Minimal impact on system performance
- Provides detailed configuration comparison reports to pinpoint problems
- Allows snapshots to be exported/imported for third-party troubleshooting
- Separates system and data file protection for more flexible recovery options
- Only product that accurately captures a "live" system
- Allows Restore from DOS
- Easy customization for various IT environments
- Proven TCO reduction with major PC vendors and corporations
- Market leader with over 15 million users
- Global solution available in 9 languages

