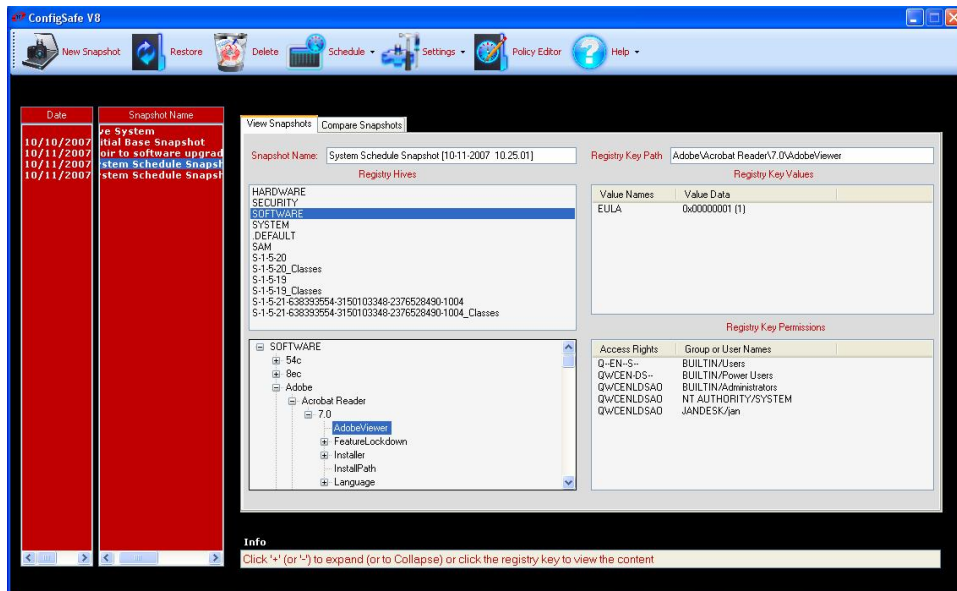




# ConfigSafe® V8 Powerful System Protection for Windows PCs



When PC problems occur, wouldn't you like to instantly return your system to the state it was in just before the problem started? With ConfigSafe V8, the newest addition to a family of market-leading system protection utilities, you can protect your PC and keep it trouble-free.

## Essential System Protection

Most PC problems result from changes made by hardware or software, inadvertent changes made by users, or

deliberate changes made by a malicious intrusion. ConfigSafe V8 protects your system by tracking changes to key system components such as the Registry, system files, dll's, network settings, and drivers. It works by taking a picture, or snapshot, of a system configuration. The ConfigSafe V8 snapshot enables Registry, files and system state restoration, returning problem PCs to a working state *in just seconds!*

## Quick and Easy Recovery

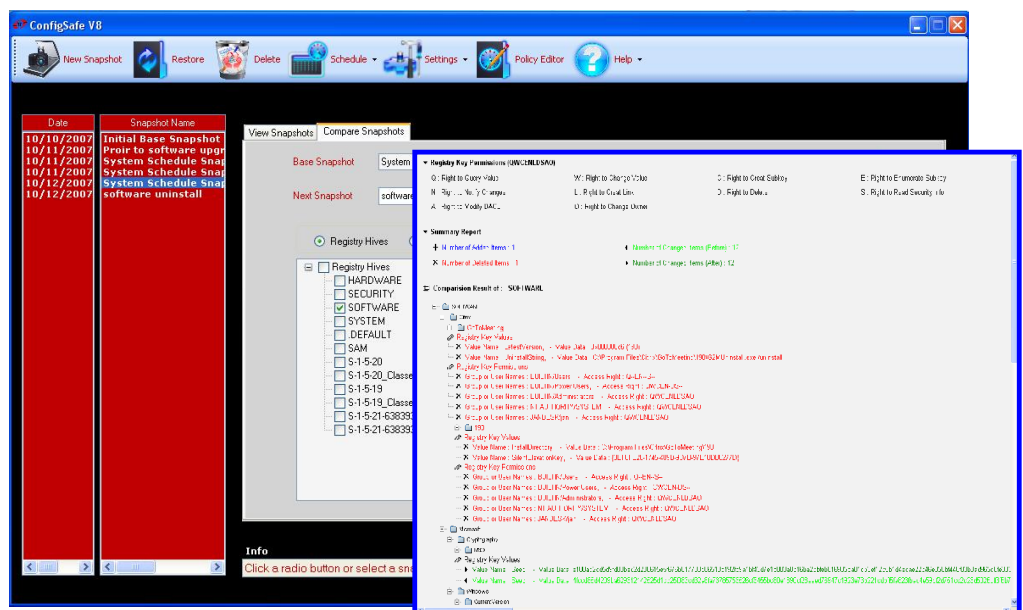
ConfigSafe V8 resolves system problems much faster and often without the need for technical assistance or lengthy troubleshooting sessions. And if users do require technical assistance, ConfigSafe V8 also helps your support center or a company's internal helpdesk provide faster, more efficient troubleshooting.

## Integration with Microsoft's System Restore

ConfigSafe V8 continues the tradition of ConfigSafe, which pioneered Windows snapshot and restore technology, but it has been re-architected to operate with a smaller footprint and with markedly faster performance. In addition, ConfigSafe V8 utilizes data from System Restore points – eliminating redundancy and conserving disk space.

## Powerful View and Compare Tools

ConfigSafe V8 goes beyond the traditional snapshot and restore functions to bring users powerful tools for viewing and comparing the Registry and file components (including Registry and file permissions) of snapshots to help identify the existence and source of a configuration problem or possible malicious intrusion.



## System Recovery from Pre-boot Environments

Seriously impaired system health may sometimes prevent a Windows XP or Vista PC from being able to boot into Windows. In these situations, the PC may be booted (with the appropriate bootable disc) into BartPE or a compatible pre-boot environment. Compatible pre-boot environments that support read, write, and execute access for NTFS drives enable the use of ConfigSafe V8's pre-boot environment plug-in for Registry hive restoration.

Once booted into a pre-boot environment, the ConfigSafe V8 PE Plug-in restores critical Windows Registry hives from the selected Snapshot. Once you are able to successfully boot back into Windows again, you may run ConfigSafe V8 and perform a more complete Snapshot restoration from the ConfigSafe V8 user interface.

## Proven Leader

With over 30 million copies installed worldwide, the ConfigSafe family of products has successfully helped to reduce total cost of ownership (TCO) and support costs for a number of leading systems vendors as well as thousands of corporations and individual users.

## ConfigSafe V8 Advantages

- Small footprint and minimal impact on system performance
- Provides detailed Registry and file comparison reports to pinpoint problems
- Displays and compares Registry and file permissions
- Separates system and data file protection for more flexible recovery options
- Integrated with Microsoft's System Restore to eliminate redundancy and conserve disk space
- Provides Registry hive restoration from pre-boot environments
- Re-architected for intrusion identification

## System Requirements

- Windows® XP or Vista
- Minimum of 50 MB available disk space

## imagine LAN, Inc.

74 Northeastern Blvd., Suite 12  
Nashua, NH 03062  
(603) 889-5889  
[www.imaginelan.com](http://www.imaginelan.com)

## Overview of Features

### SNAPSHOT: Tracks and preserves record of changes to system

- Registry
- Folders
- Files
- System State
- Snapshots can be stored in user selected locations

### RESTORE: Quickly returns system to chosen Snapshot configuration

Can return system to:

- Last working configuration
- Any saved Snapshot configuration
- Original configuration
- Enables full system restoration or Registry only restoration

### VIEW, COMPARE & REPORT: Generates reports of system changes

Compare system changes

- Between current configuration & any Snapshot
- Between two Snapshots
- Compare Registry and file permission changes

View Registry (including permissions) of any Snapshot or current system

### MANAGE: Define and manage Snapshot options

- Schedule automatic Snapshots
- Rename, delete and organize Snapshots

### PRE-BOOT RECOVERY: Restores Registry Hives from BartPE or compatible pre-boot environment

- SYSTEM
- SOFTWARE
- SECURITY
- SAM

